

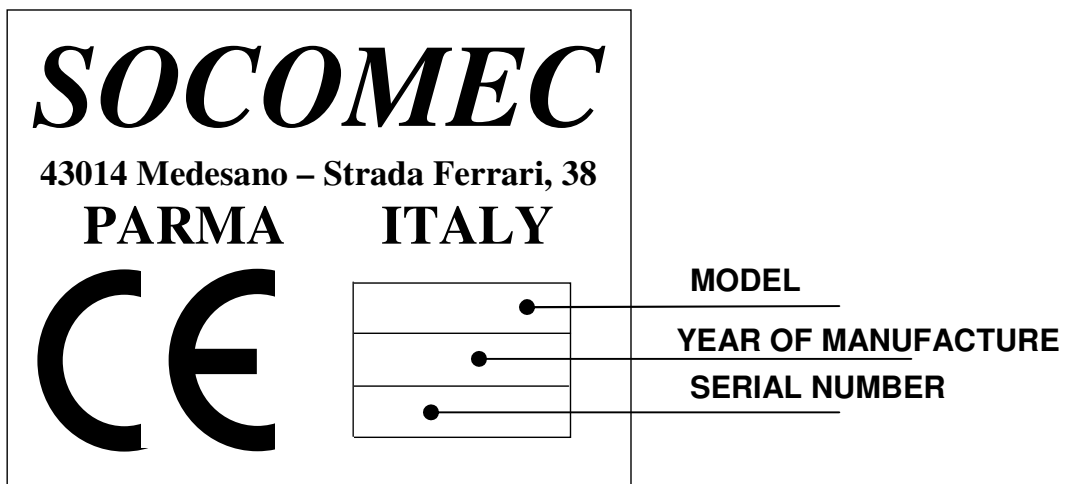
2 Technical Features

2.1 Use

The hammer has been projected and manufactured for all types of demolitions, on any kind of material, to drive poles, to cut and break asphalt surfaces.

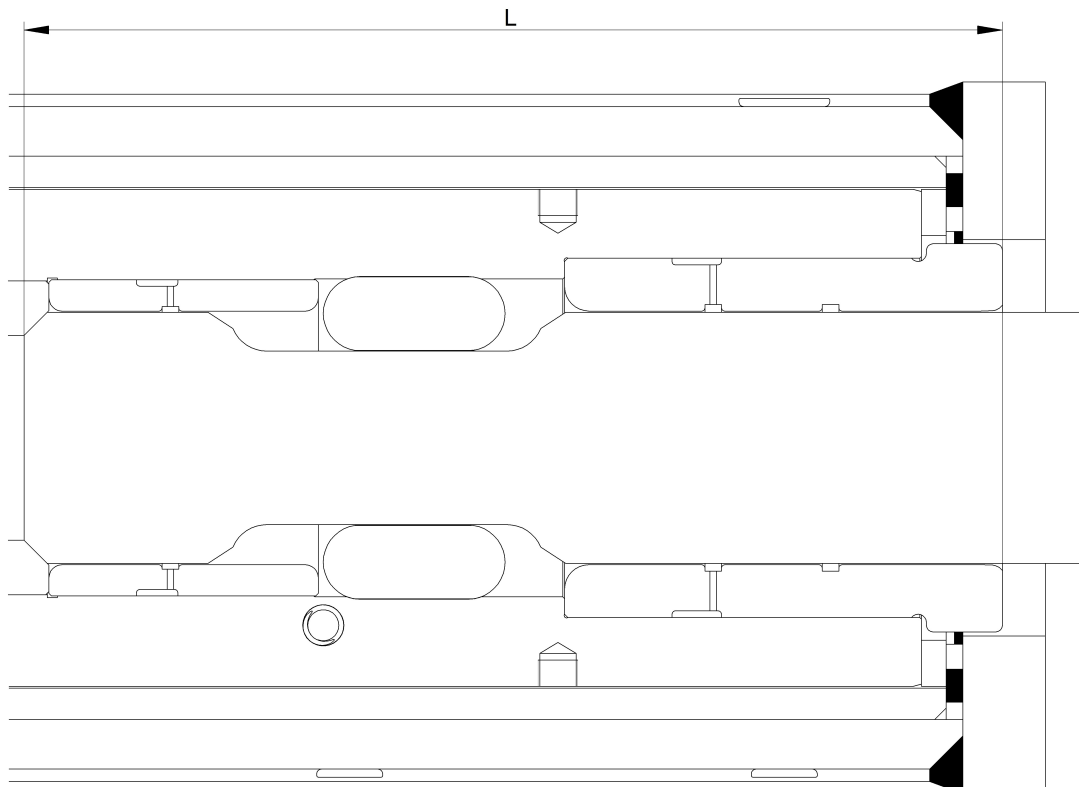
The manufacture is in accordance with the European Directive 2006/42/CE and with the Noise Directive 2000/14/CE.

Socomec S.p.A. warrants that its machines are manufactured according to the regulation quoted up-above and puts the marking "CE" on them.



2.2 Technical features DMS 2400

Technical features	unit of measurement	Value
Energy per stroke	J	6400
Maximum Frequency	s/min	460 - 630
Maximum oil flow	l/min	220
Maximum working pressure	bar	140
Maximum exhaust back pressure	bar	10
Accumulator charging pressure	bar	35
Calibration pressure of the hydraulic system maximum valve	bar	180
Hammer weight in working conditions	Kg	2400
Tool weight	Kg	154
Pin retainer tool weight	Kg	10
Pressure line pipe diameter (EN 856 - 4SP)	G	1"
Return line pipe diameter (EN 853 - 2SN)	G	1"¼
Tool diameter	mm	152
Hammer height with tool without adapting plate	mm	2569
Maximum length of the tool inner guide (L)	mm	265
Maximum diameter in front and back the tool bushings	mm	158
Maximum oil temperature in the tank	°C	80
Maximum absorbed power	Kw	51
Excavator weight	t	25 - 33



2.2.1 Tightening values:

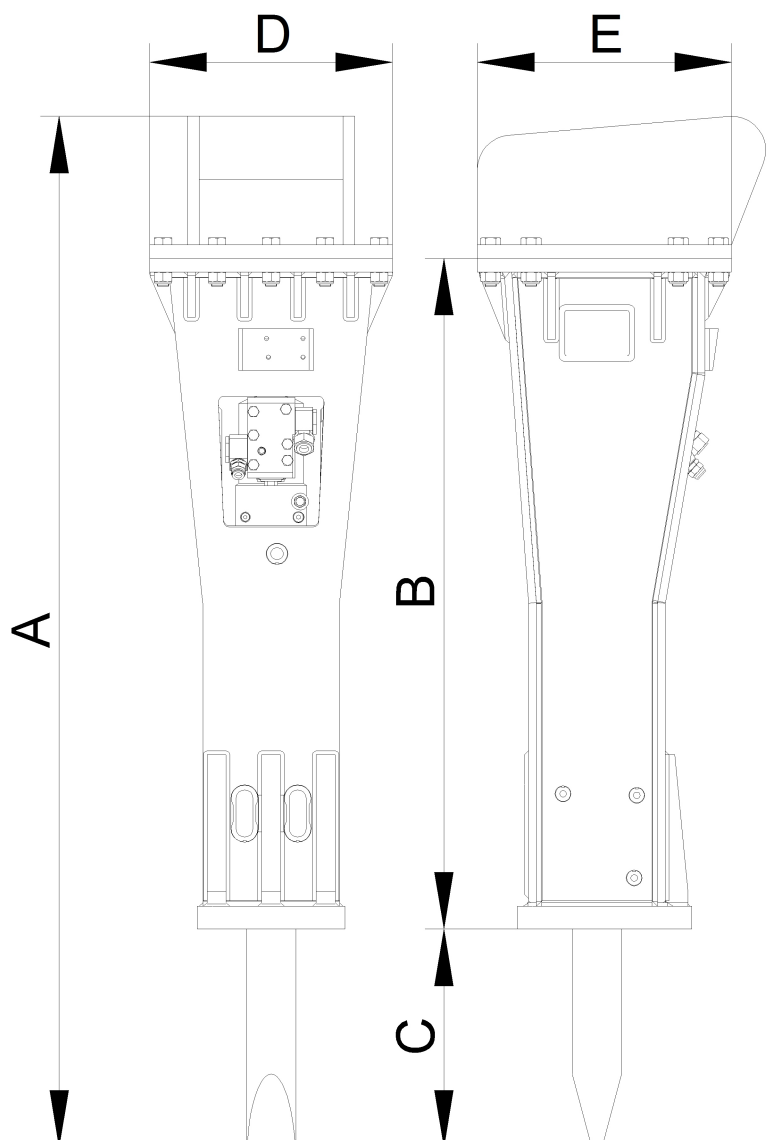
Component denomination	Unit of measurement	Value
Accumulator cover screw	Nm	800
Accumulator screw	Nm	800
Articulation plug	Nm	150
Variator screw	Nm	140
Block Screw	Nm	250

2.3 Optimal environmental working conditions:

DENOMINATION	Unit of Measurement	VALUE (between)
Temperature	°C	[-5 ; +45]
Humidity	%	[40 ; 90]

2.4 Overall dimensions DMS 2400 TS

Dimensions	Size mm
A	2989
B	1981
C	588
D	715
E	760



2.5 The accumulator

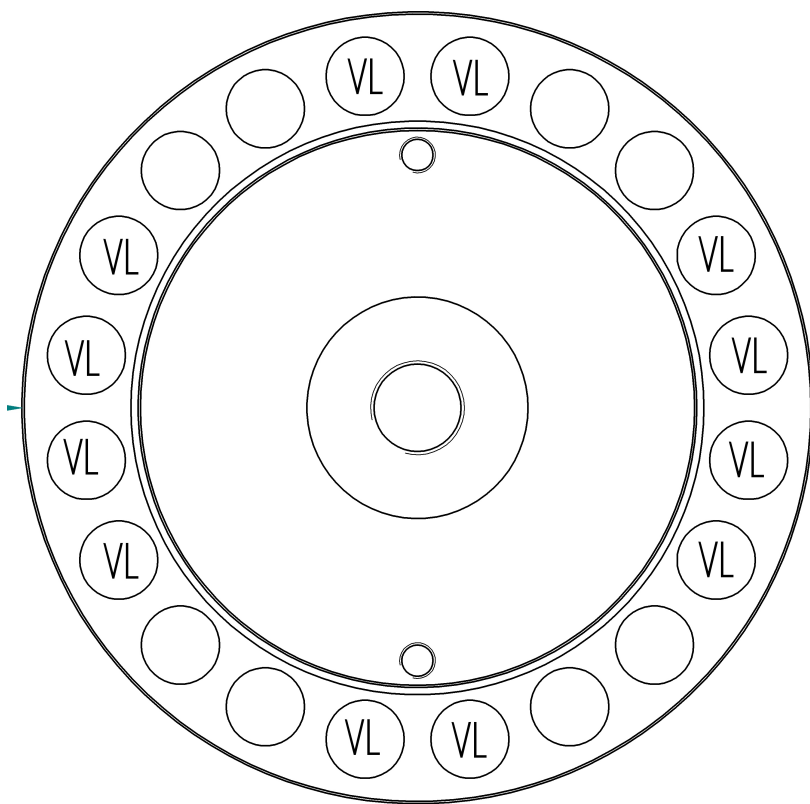


It's necessary to unscrew the long screws in order to remove the accumulator from the monoblock.

You will find here below the accumulator details with the long screws to be unscrewed highlighted.

DMS 2400 ACCUMULATOR SCREWS

V.L. = Long Screws



BLOCK SIDE